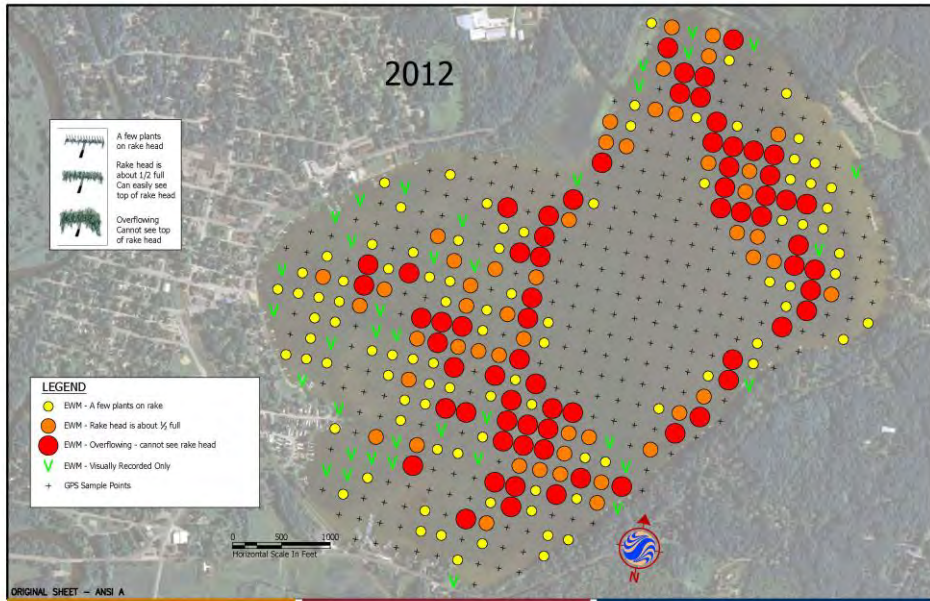
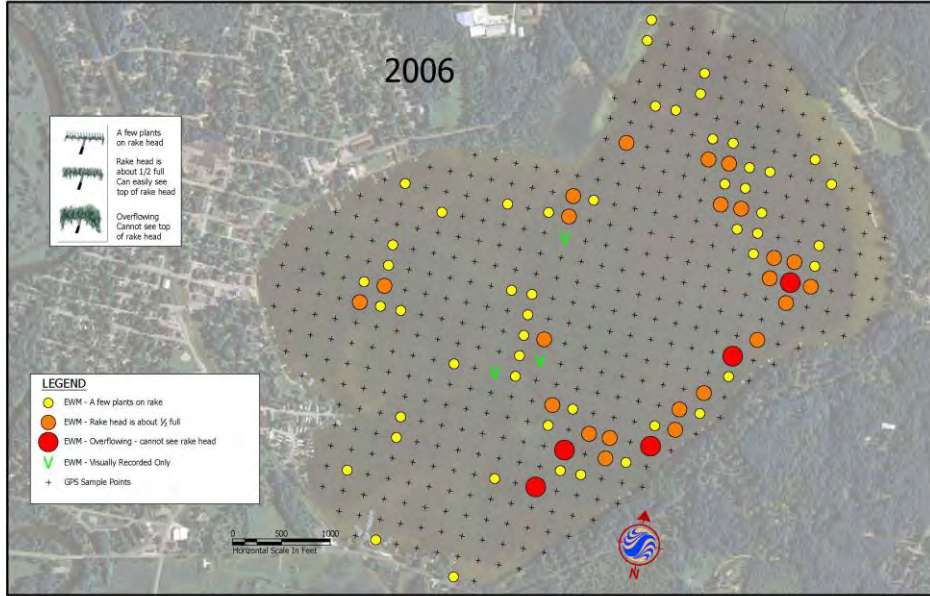


Figure 12: Expansion of EWM from 2006 to 2012 [14]



Stantec
 12075 Corporate Parkway
 Suite 200
 Mequon, WI 53092
 Tel. (262) 241-4466
 Fax. (262) 241-4901
 www.stantec.com

Project Information
 Project Number: 193702275

	Initials	Date
Prepared by	EJM	07/09/13
Peer Review by	JTS	07/10/13
Final Review by	MEK	07/10/13

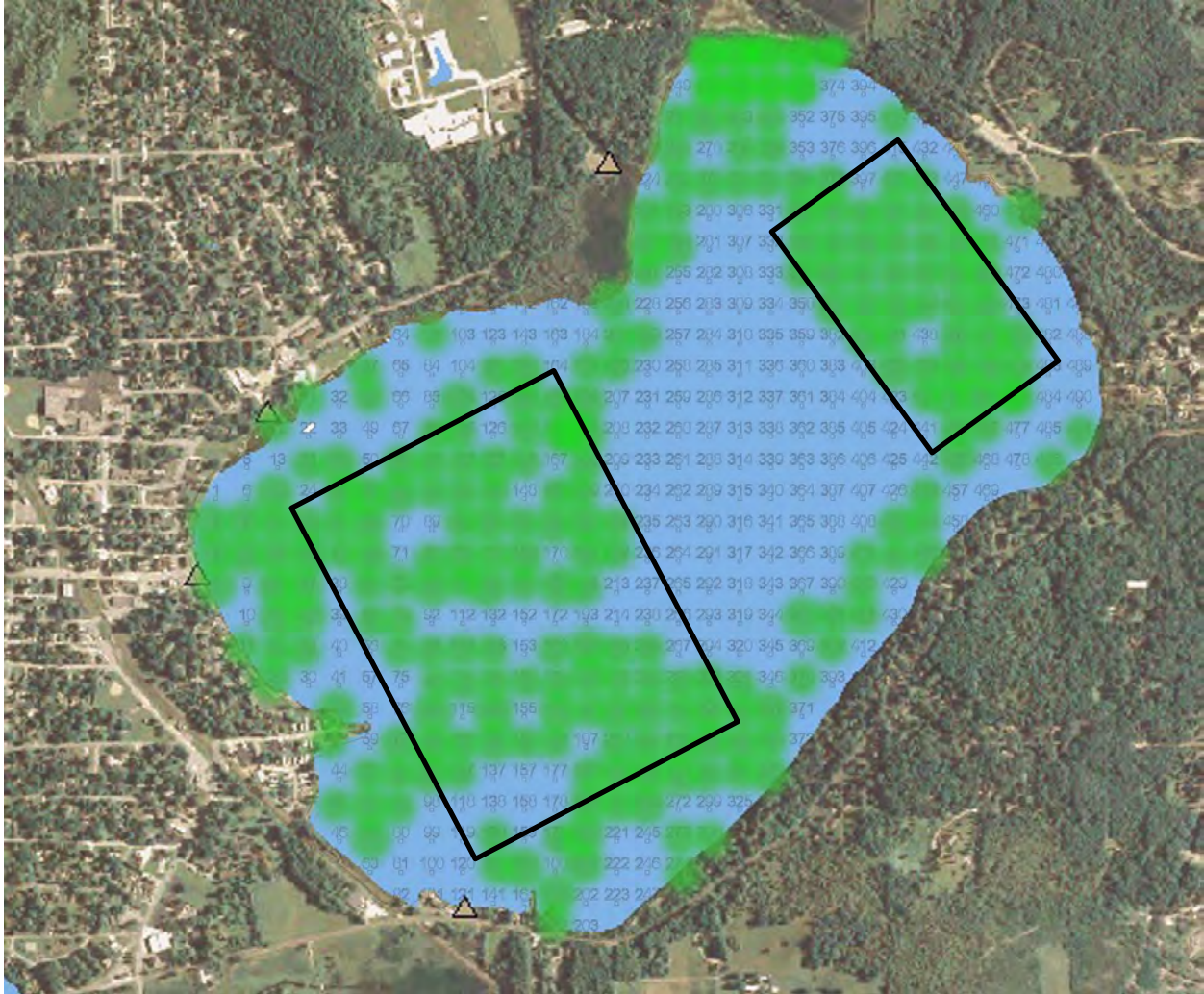
Data Sources include: ESRI and Stantec
 Image: NADP 2010
 The information on this map has been completed by Stantec staff from a variety of sources and is subject to change without notice. Stantec makes no representations or warranties, express or implied, as to accuracy, completeness, timeliness, or rights to the use of such information.

Client/Project
 KENOSHA COUNTY SILVER LAKE
 PROTECTION ASSOCIATION
 KENOSHA COUNTY, WISCONSIN

Figure No.
 1.0

Title
 2006 & 2012 EWM DISTRIBUTION
 SILVER LAKE

Silver Lake Proposed Treatment- Spring 2013



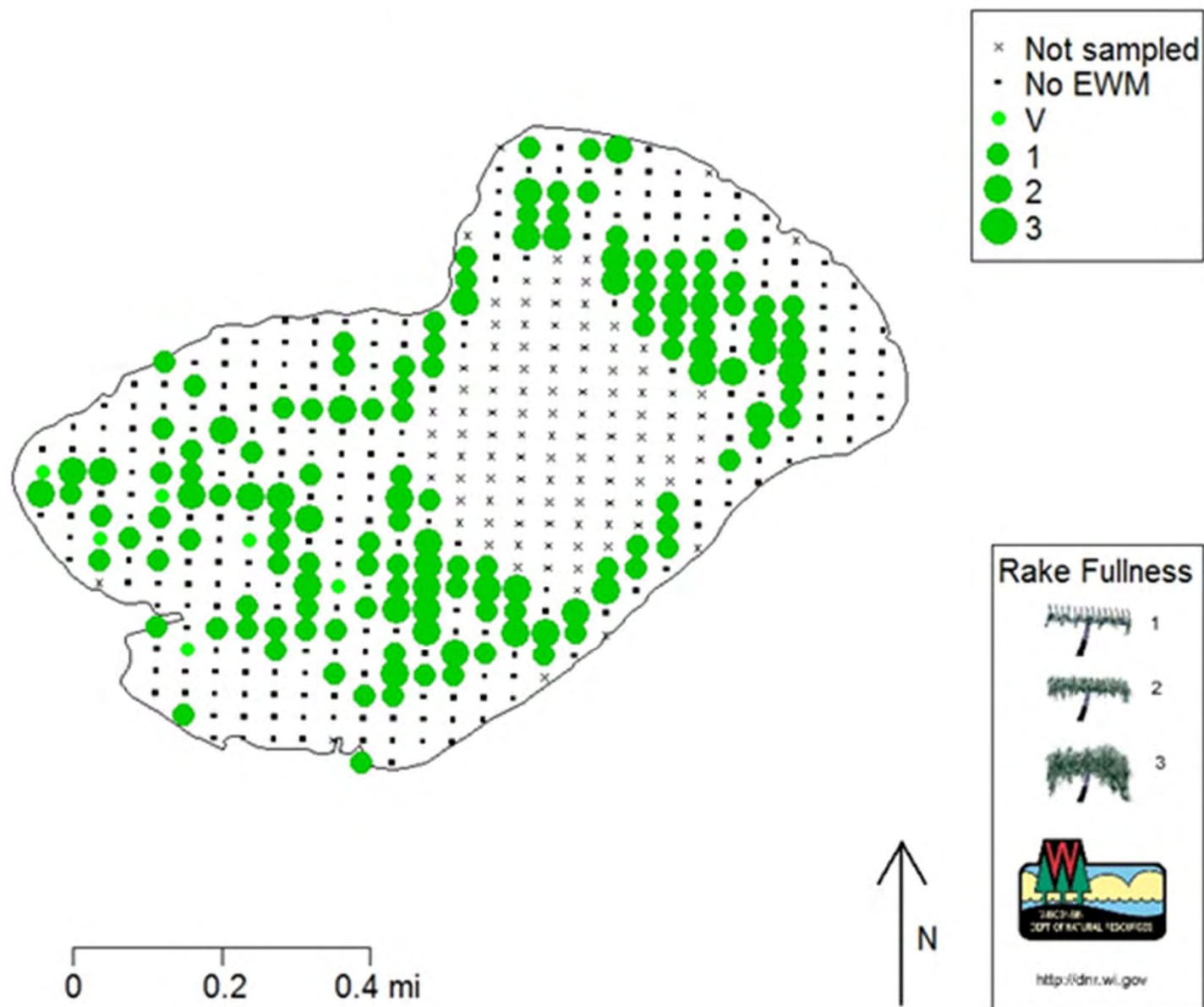
Chemical Treatment Targeting EWM on a Lake-Wide Basis for 5000 acre/ft of water

Application area: 130 acres applied at 9.6 gal/acre

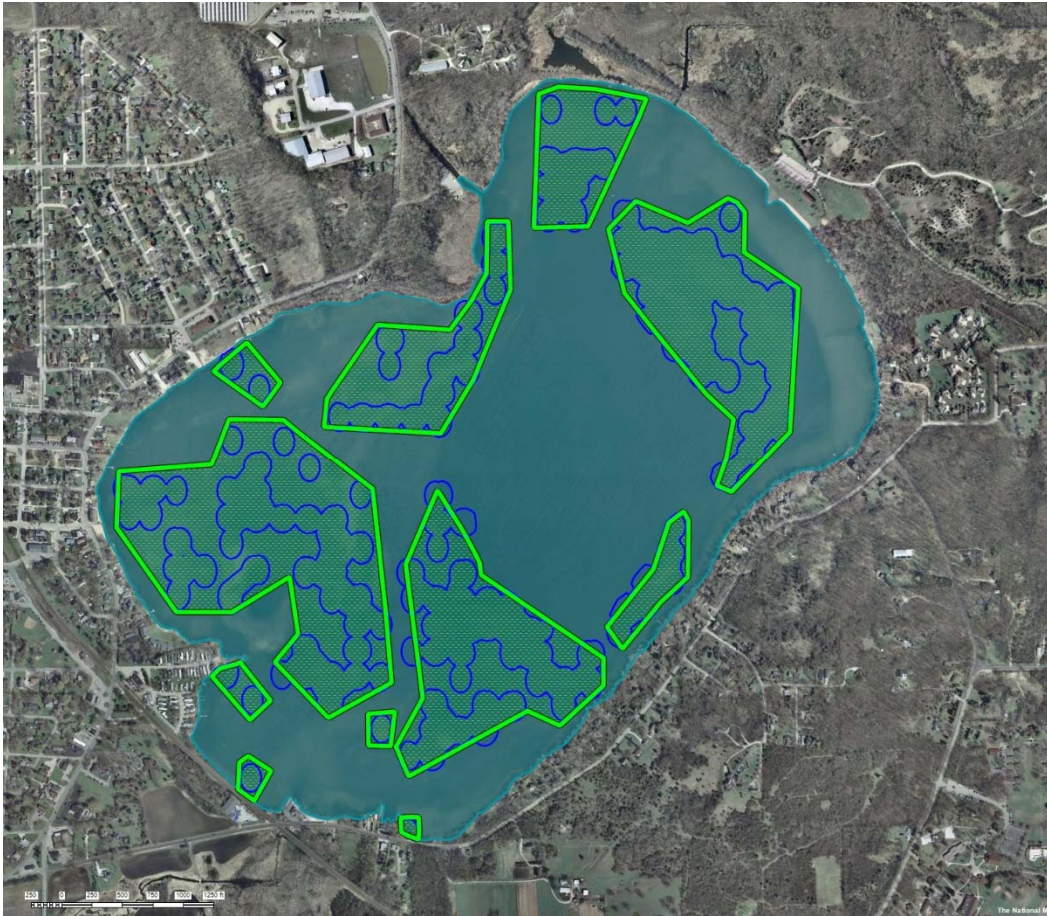
Actual treatment locations will be determined by licensed applicator by conducting a pre-treatment plant survey.

DMA-4 Treatment Areas for EWM: There are no swimming or fishing restrictions. Do not use water from treated areas for irrigation purposes for 21 days after treatment, or until an approved assay indicates the 2,4-D concentration is 100 ppb (0.1 ppm) or less. A copy of the herbicide label will be made available upon request.

Silver Lake, Kenosha Co., August 27, 2014



Proposed SonarOne[®] Pellet Treatments Area (2015)



Lake: 525.6 acres
Mean Depth: 11.1 feet
Volume: 5824 acre-feet
Littoral Treatment Area: 220 acres
Treatment Area Mean Depth: 7.4 feet

**Estimated Milfoil Coverage
based upon August 2014
Survey – 220 acres**

Confidential: This information is provided confidentially for the review and potential implementation by Wisconsin Department of Natural Resources. Information in this document may not be copied or distributed without the written approval of SePRO Corporation.



The Stewards of Water

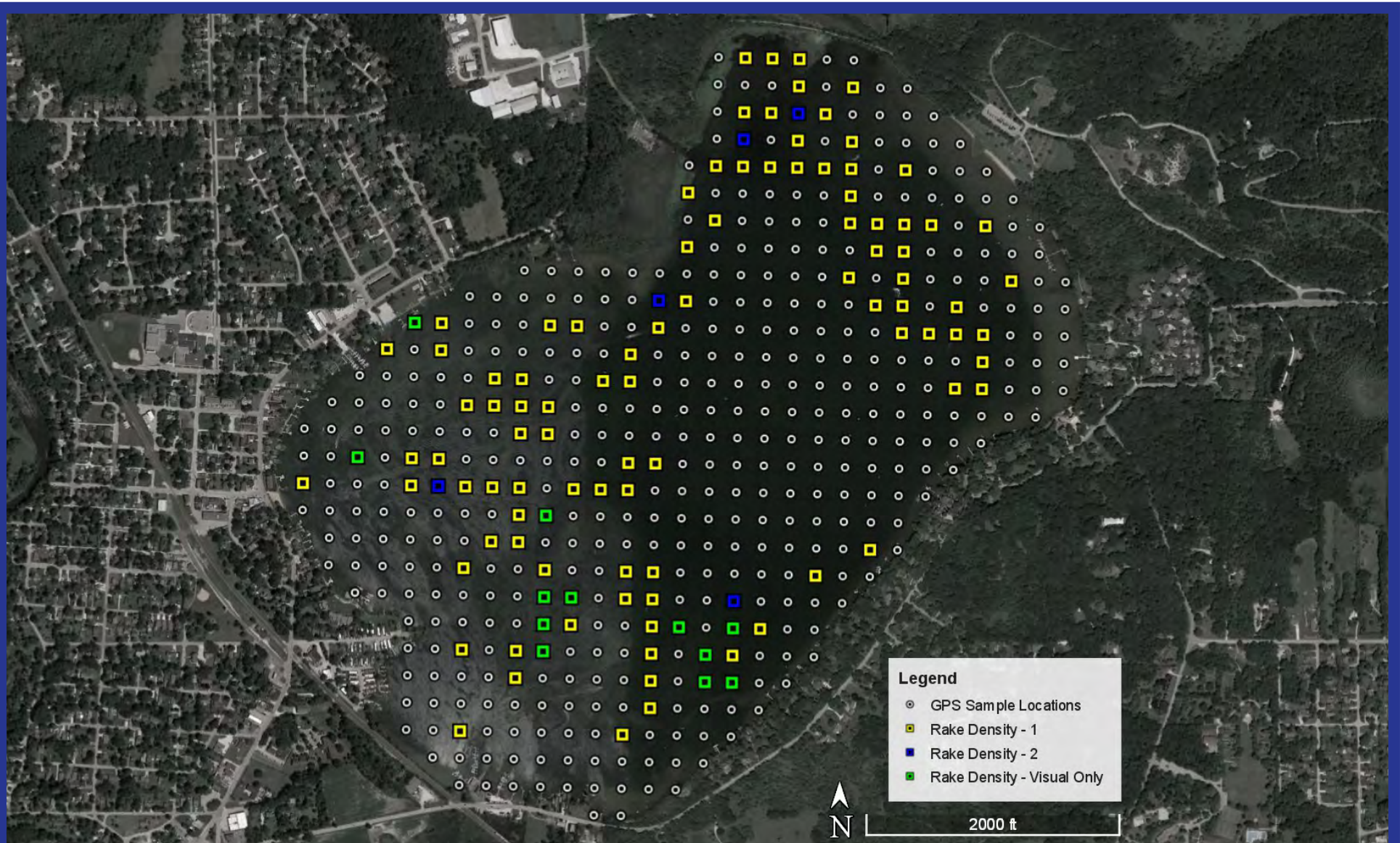


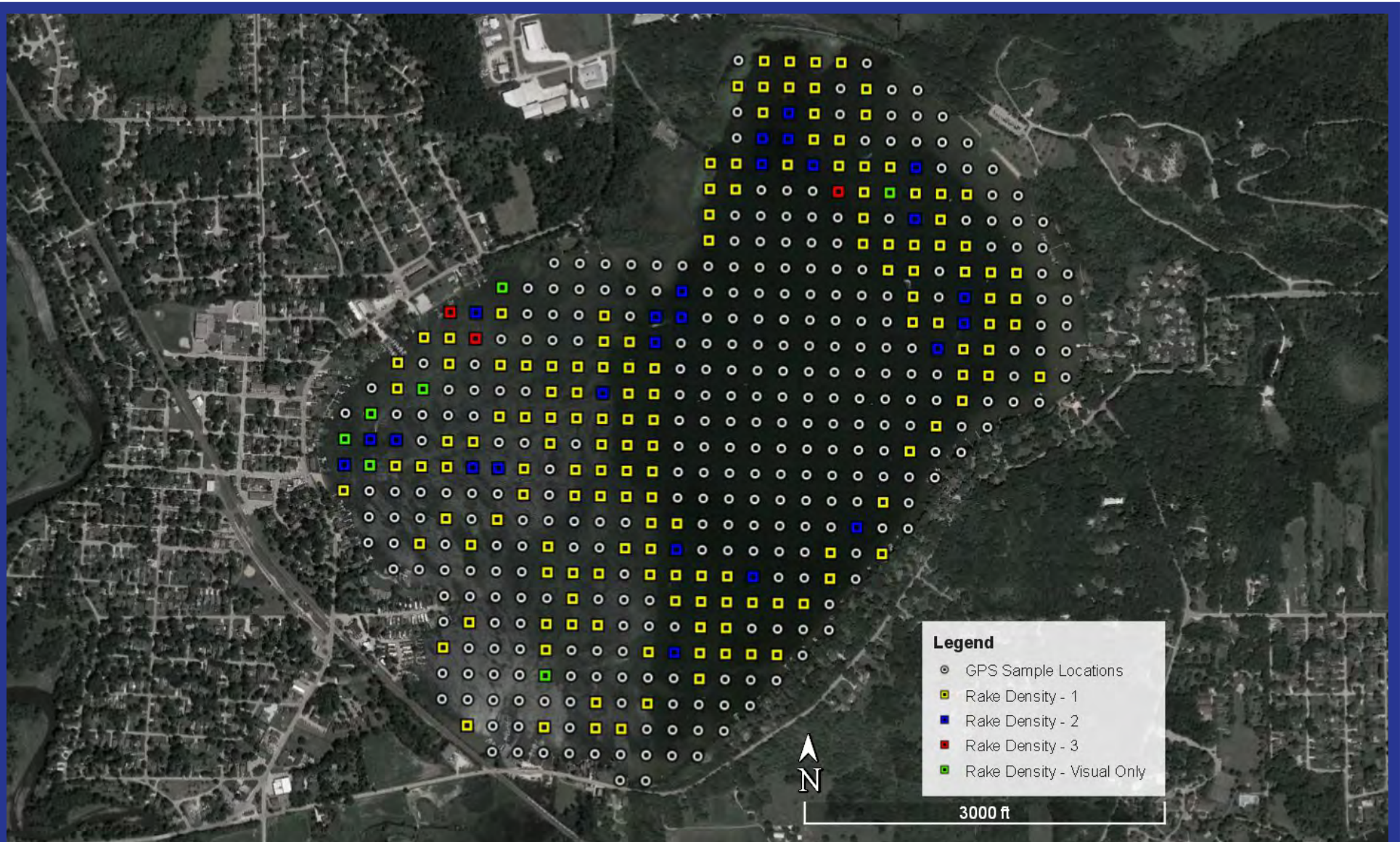
2018 HWM Management Location

Silver Lake, Kenosha County

Surveyed: September 6, 2017

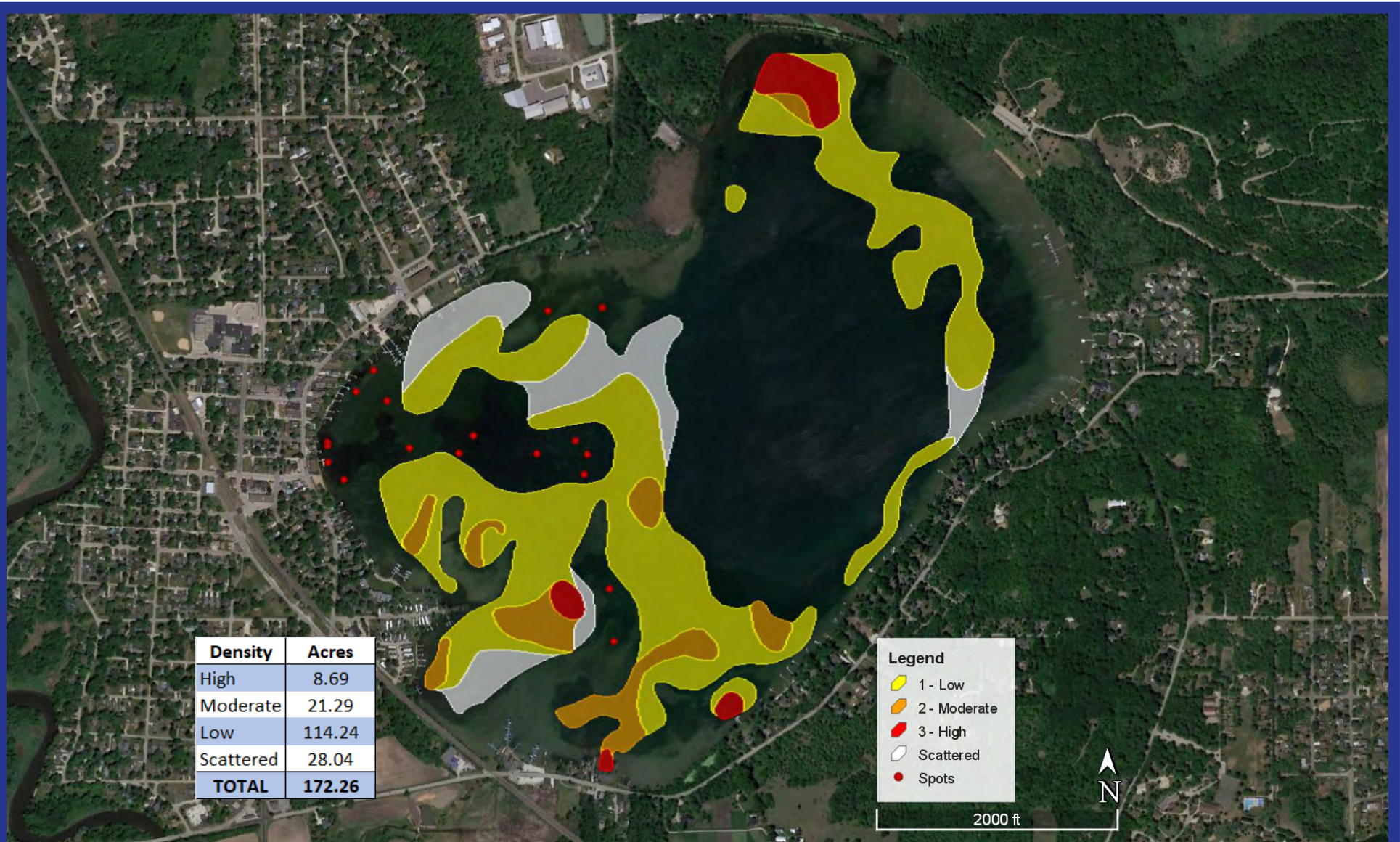
Figure 1







Area	Acres	Avg. Depth
A	10.7	3
B	0.5	3
TOTAL	11.2	---





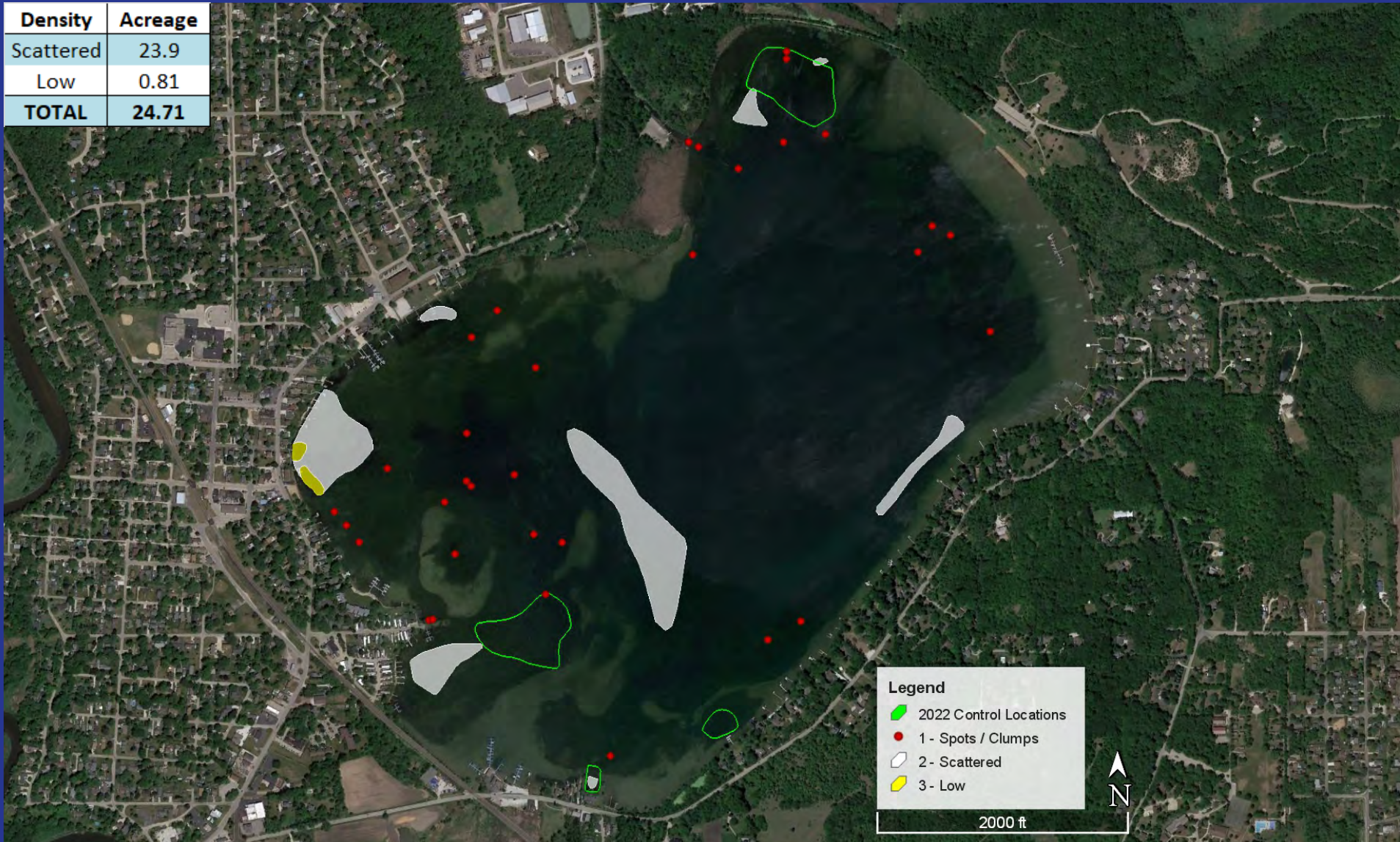
Area	Acres	Avg. Depth
A	6.7	4
B	1	3.5
C	0.5	2.5
D	6.2	3.5
TOTAL	14.4	---

2022 HWM Management Locations


Wisconsin
Lake & Pond Resource LLC
 "Providing Professional Resources for Management of Your Lake or Pond"
www.WisconsinLPR.com (920) 872-2032

Silver Lake, Kenosha County
 Surveyed: Sept. 14 & 16, 2021

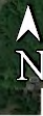
Density	Acreage
Scattered	23.9
Low	0.81
TOTAL	24.71



Legend

- 2022 Control Locations
- 1 - Spots / Clumps
- 2 - Scattered
- 3 - Low

2000 ft



2022 HWM Locations

Figure 2
 Silver Lake, Kenosha County
 Surveyed: October 20, 2022

